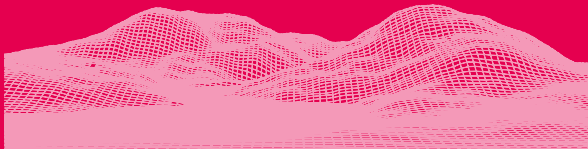


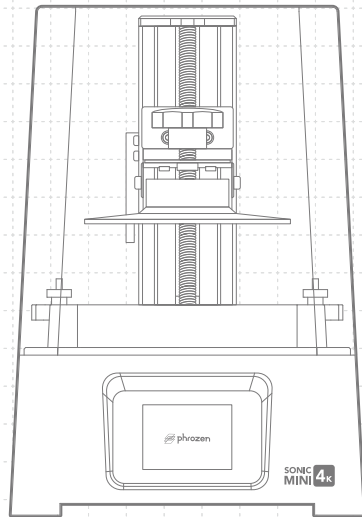


SONIC
MINI 4k



Dear User,

Thank you for joining us. Please read the Sonic Mini 4K manual thoroughly and follow the instructions step by step to get the best printing experience.



01 Introduction

Printer Parts

PART.1
Building Plate

PART.2
Resin Vat

PART.3
LCD Screen

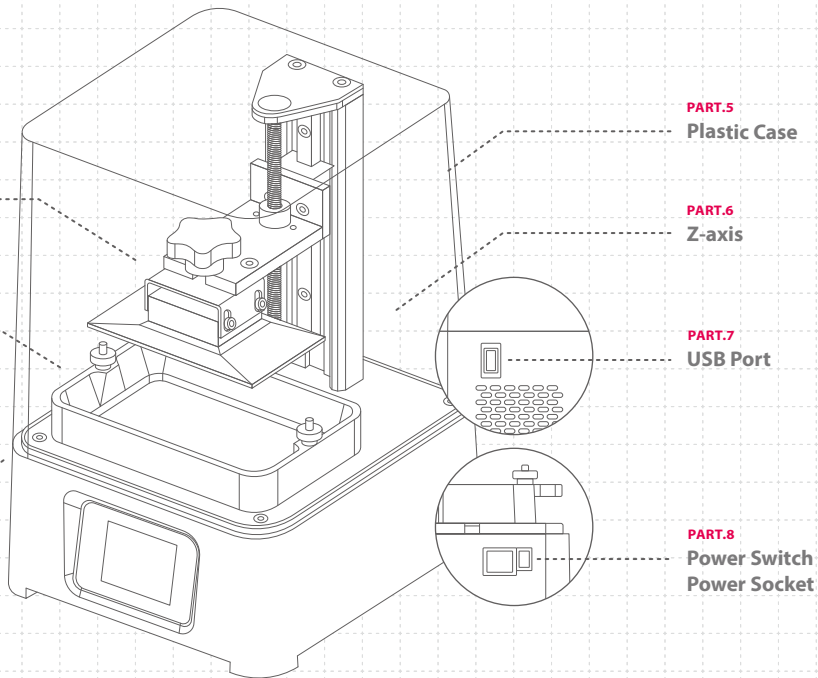
PART.4
Touch Panel

PART.5
Plastic Case

PART.6
Z-axis

PART.7
USB Port

PART.8
Power Switch
Power Socket



The Toolbox



User Manual



Gloves



Power Adaptor



Plastic Funnel



Scrapers



Allen Wrench



USB



Spare Screws



Building Plate

Operation

System	Phrozen OS
Operation	2.8 inch Touch Panel
Slicer Software	CHITUBOX V1.6.5 or above
Connectivity	USB

Printing Specifications

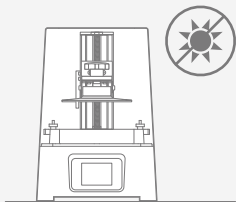
Technology	Resin 3D Printer - LCD Type
Light Source	405nm ParaLED® Matrix 2.0
XY Resolution	0.035 mm
Layer Thickness	0.01-0.30 mm
Max Printing Speed	80 mm / hr
Power Requirement	24VDC ; 2A max

Hardware Specifications

Printer Size	L25 x W25 x H33 cm
Printing Volume	L13.4 x W7.5 x H13 cm
Printer Weight	5 kg

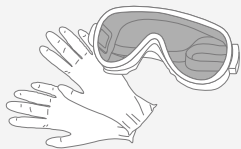
* All specifications have been tested in a laboratory. Please note that certain specifications may be subject to change without prior notice.

02 Key Notes Before Start



Stable Printing Environment

Store your 3D printer in a dry and ventilated environment. Avoid exposure to direct sunlight. Make sure to place it on a flat surface.



Protective Measures

While printing and using resin, please make sure to wear gloves, masks, protective goggles, and long-sleeved clothing.

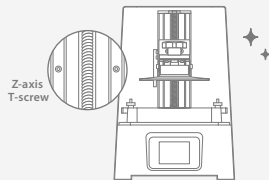
Maintenance

Clean the Z-axis

First, dry clean the Z-axis T-screw. Then apply a thin layer of general lubricant on it, so that it whirls smoothly.

Clean the 3D Printer

Use sanitizing alcohol and tissue paper to carefully clean the printer, the resin vat, and the building plate.



03 Prepare Your 3D Printer

For first-time use, please thoroughly follow the steps below to conduct the LCD Test and calibrate your Z-axis so that your 3D printer is ready to print.

LCD Test

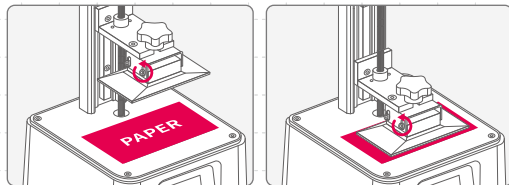
- 1 Click on TOOLS. Then click on LCD TEST.
- 2 Check to see if the LCD screen displays the same image as seen on the touch panel.
- 3 When the LCD screen clearly displays the image, the LCD TEST is complete.



* Please refer to the actual operation situation based on the printer display.

Z-axis Calibration

- 1 Click on TOOLS. Then click on Z CALIB.
- 2 Remove the resin vat. Place a piece of A4 paper on the LCD. Unscrew 4 screws on the sides of the building plate.
- 3 Wait until the building plate touches the LCD screen.
- 4 Then tighten all 4 screws. Tug the paper to make sure it can't be moved easily. Click DONE to finish calibration. Wait until the building plate retracts to the TOP.
- 5 Z-axis Calibration is now complete.



04 Perform the Printing Test

After conducting the Z-axis Calibration and LCD TEST, let's move on to the Printing Test.

Prepare Your 3D File

- 1 On your computer, import the STL file to CHITUBOX V1.6.5 or above.
- 2 Click settings to add a new printer "Sonic Mini 4K". Set your Print Parameters according to the resin you will use.
- 3 Slice the 3D file and save it as CTB file, then import it onto your USB.



Download Slicer

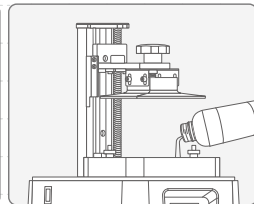
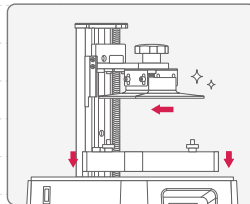


Resin Profile

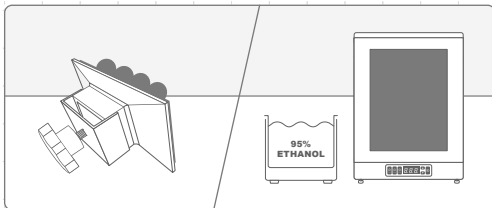
Find out our recommended resin profiles to have the best printing performance.

Printing Test

- 1 Install the building plate and resin vat to your Sonic Mini 4K.
- 2 Make sure that both the resin vat and the building plate are clean and do not have any residual resin.
- 3 Shake the resin bottle for 1 minute. When pouring, make sure the resin does not exceed the mark on the resin vat.
- 4 Insert your USB into Sonic Mini 4K. Choose the file and click GO to begin printing.



- 5 Keep the plastic case closed during printing to prevent excessive UV light.
- 6 Once printing is complete, remove the building plate from the printer. Then tilt and place the building plate onto a table and use the metal scraper to carefully remove your print.
- 7 Use 95% sanitizing alcohol or Phrozen Wash Resin Cleaner to rinse your printed model. Then cure your models with a Post-Curing Chamber. After curing, your first print is complete.



After-sales service & warranty

- Phrozen offers a one-year warranty for all parts, excluding consumable components such as the LCD screen and FEP film.
- Sonic Mini 4K LCD screen is covered under a 3-month warranty. Please note that this warranty does not cover any damages caused by human factors.
- If you encounter any difficulties, please scan the QR codes down below to contact us.

Contact us!



Congratulations!

You have just completed your first run.
We hope you've had a great experience!

Please follow Phrozen's social media accounts
and subscribe to our YouTube channel to learn
more about printing tips and share information
with the community.



Facebook



Facebook Group
Sonic Mini 4K



YouTube

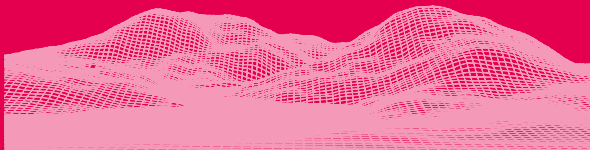


Instagram



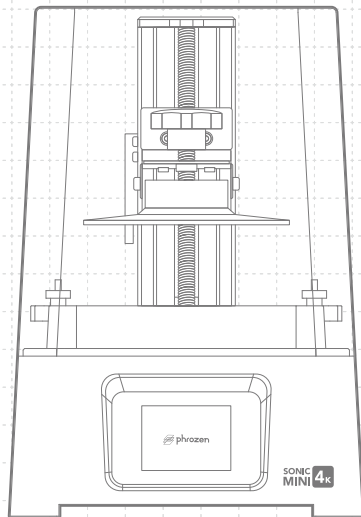


SONIC MINI 4k



親愛的使用者您好，

非常開心您的加入，為了您良好的使用經驗，請您務必詳閱 Sonic Mini 4K 說明書進行產品測試及列印。



01 產品介紹

機台構造說明

PART.1
列印載台

PART.2
樹脂槽

PART.3
LCD面板

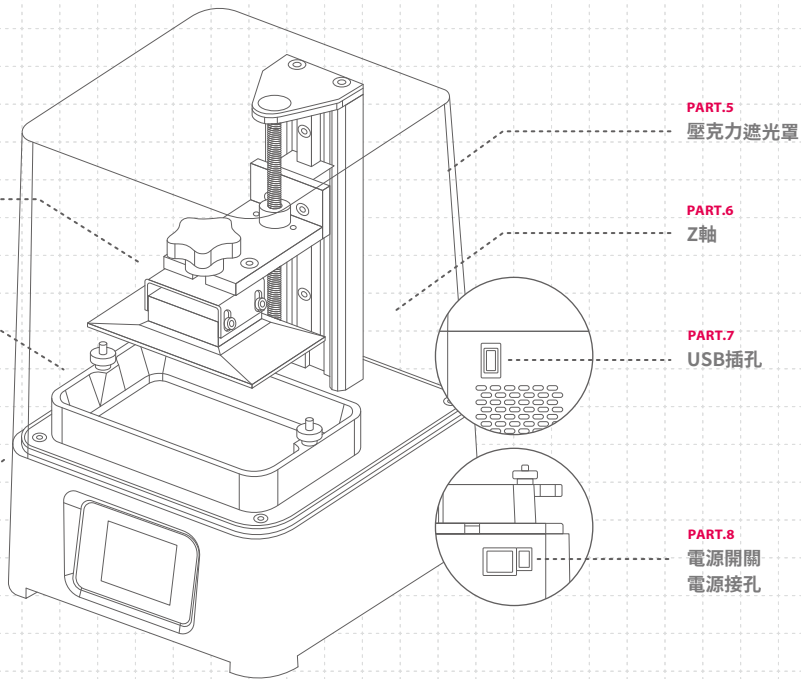
PART.4
觸控螢幕

PART.5
壓克力遮光罩

PART.6
Z軸

PART.7
USB插孔

PART.8
電源開關
電源接孔



配件盒內容物



說明書



手套



變壓器



塑膠漏斗



軟硬刮刀



六角板手



USB



備用螺絲



列印載台

操作系統

機台系統	Phrozen OS系統
操作介面	2.8吋 IPS觸控面板
切層軟體	CHITUBOX V1.6.5 或以上
檔案傳輸模式	USB

技術規格

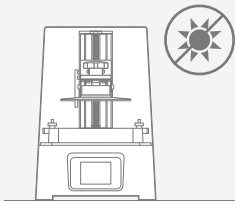
技術規格	LCD光固化
光源設計	405nm ParaLED® Matrix 2.0
XY 解析度	0.035 mm
切層厚度	0.01-0.30 mm
最快列印速度	80 mm / 小時
適用電壓	24 VDC ; 2A max

硬體規格

機台尺寸	長25 x 寬25 x 高33 公分
列印尺寸	長13.4 x 寬7.5 x 高13 公分
機台重量	5 公斤

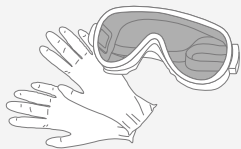
* 以上為實驗測試數據，若有內容更改恕不另行通知。

02 使用前注意事項



列印環境

請將3D列印機置於室內乾燥通風處之水平桌面，並避免陽光直射與高溫曝曬。



保護措施

進行列印時，請佩戴手套、口罩、護目鏡、長袖衣物等個人防護設備。

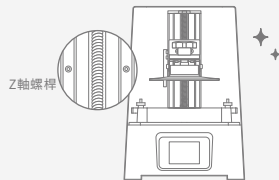
機台保養

Z軸清潔

擦乾Z軸螺桿後，請使用少量一般潤滑油，潤滑Z軸螺桿使其運行更順暢。

機台清潔

可使用消毒酒精與紙巾小心擦拭機台、樹脂槽與列印載台。

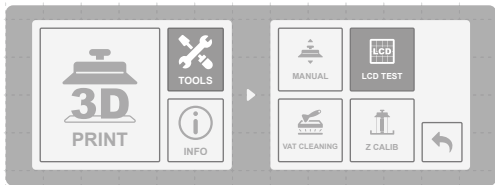


03 準備您的3D列印機

初次使用請依下列步驟執行機台LCD測試與Z軸校正，設置您的3D列印機。

LCD 測試

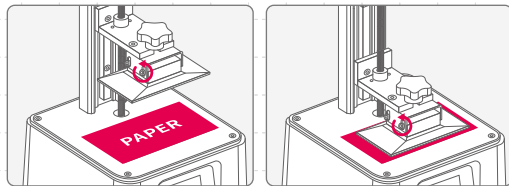
- 1 點選「TOOLS」，然後點選「LCD TEST」。
- 2 確認LCD面板發光區域與觸控面板顯示圖像相同。
- 3 當LCD面板完整顯示圖像時，即完成LCD測試。



* 實際操情形請依機台顯示為主。

Z軸校正

- 1 點選「TOOLS」，然後點選「Z CALIB」。
- 2 移除樹脂槽，並放置一張A4紙張在LCD面板上方，並將載台兩側四顆螺絲轉鬆。
- 3 點選「NEXT」，等待載台下降至底部接觸到LCD面板。
- 4 依照對角的順序轉緊4顆螺絲至紙張不移動，點選「DONE」，待載台回到Z軸上方。
- 5 Z軸校正即完成。



04 執行列印測試

執行Z軸校正與LCD測試後，接著可進行列印測試。

準備3D列印檔

- 1 在電腦中，將您的STL檔放入切層軟體CHITUBOX。
(V1.6.5版本或後續更新版)。
- 2 選擇新增「Sonic Mini 4K」列印機，並依照您使用的樹脂設定列印參數。
- 3 設定完成後，將3D檔案進行切層並放入USB中。
- 4 檔案準備即完成。



切層軟體下載

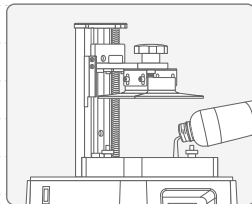
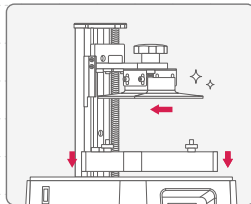


樹脂參數

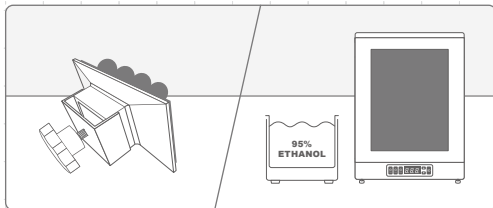
使用我們推薦的樹脂參數
讓列印的表現更加出色。

列印測試

- 1 將列印載台與樹脂槽安裝至您的列印機上。
- 2 確認樹脂槽與列印載台乾淨且無異物。
- 3 上下搖晃樹脂1分鐘後倒入樹脂槽，倒入樹脂時請勿超出樹脂槽上的「MAX」標記。
- 4 插入USB，選擇檔案並點選「GO」開始列印。
- 5 列印時請蓋上壓克力遮光罩防止其他光線影響列印。



- 待列印完成後，將載台從列印機上移至桌面。將列印載台斜靠於桌面，一手固定並小心使用金屬刮刀將列印成品從載台上取下。
- 使用95%的酒精或 Phrozen Wash 等清洗劑清洗模型，再使用固化燈固化模型，列印測試即完成。



產品保固與售後服務

- Phrozen機台提供1年非人為損壞保固，列印耗材LCD面板與FEP膜除外。
- Sonic Mini 4K 的 LCD 面板提供3個月非人為損壞保固。
- 若使用上遇到任何問題，請掃描下方QRcode，聯絡 Phrozen 團隊。

Phrozen
客服團隊



恭喜

恭喜您完成初步操作流程，感謝您的支持並期望您有良好的使用體驗。

歡迎關注Phrozen的社群帳號，並訂閱我們的 Youtube Channel 學習更多關於列印的技巧並分享您的列印經驗。



Facebook



Facebook 社團



YouTube



Instagram